

	<h1 style="text-align: center;">Battery Conversion Kit</h1> <p style="text-align: center;">Models: T1 Battery, Speed Scrub 15" Battery (Lithium-ion to AGM)</p>		
---	---	---	---

This kit includes the necessary parts to convert a machine currently equipped with a Lithium-ion battery to use an AGM battery. Do not attempt to exchange battery types unless battery conversion kit is installed, machine and battery damage may result.

INSTALLATION INSTRUCTIONS:

Installation Time: 1 hour

TOOLS REQUIRED: Philips screwdriver, 10 mm wrench, 8 mm socket wrench and small standard screwdriver.

FOR SAFETY: When servicing machine, wear protective gloves and eye protection when handling battery and battery cables.

1. Remove the battery compartment cover from machine by removing two screws at bottom of cover (Figure 1).

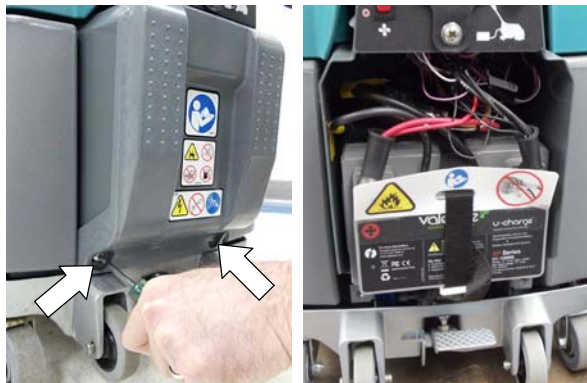


Fig. 1

2. Disconnect the black negative (-) cable first then red positive (+) cable from battery and unplug the battery's communication cable (Figure 2).

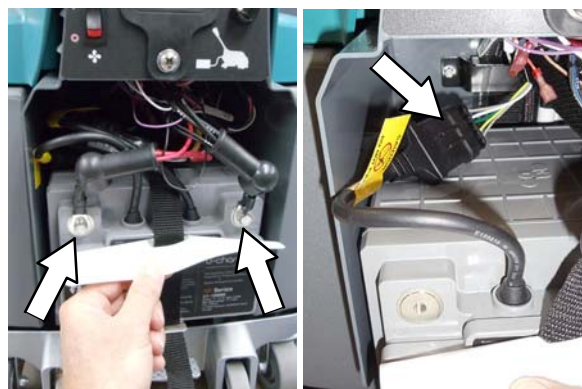


Fig. 2

3. Unfasten the battery support strap and carefully remove the battery from machine.

Kit Contents			
Item No.	Part Number	Part Description	Qty
1	1064899	Harness, Jumper [AGM]	1
2	1067790	Charger, 12VDC, 120/240V [AGM]	1
3	1064516	Indicator, Battery, 12VDC	1
4	1065438	Gauge, Voltmeter, 12VDC Nominal	1
5	1065086	Battery, 12VDC [AGM]	1

4. Remove the top and bottom wire harness retainer brackets from machine (Figure 3).

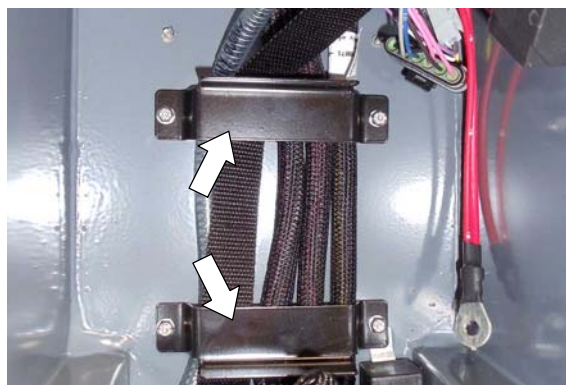


Fig. 3

5. Disconnect the wires connected to the timer module and remove module from machine (Figure 4).

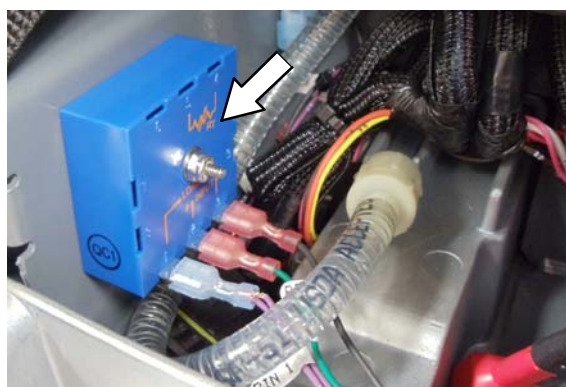


Fig. 4

- Disconnect the lithium-ion battery jumper harness and remove from machine (Figure 5).

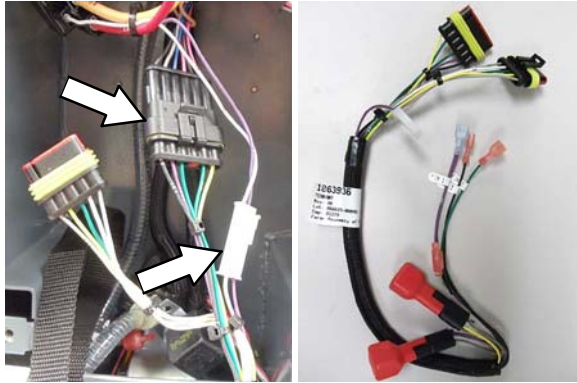


Fig. 5

- Connect the AGM battery jumper harness in its place (Figure 6).

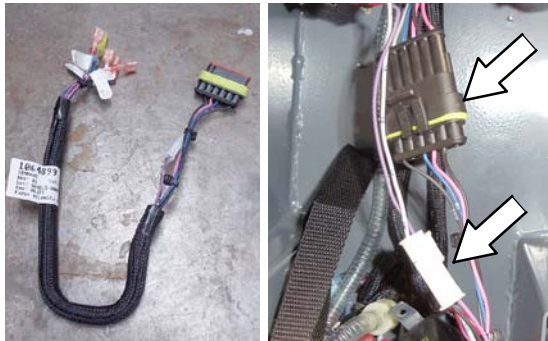


Fig. 6

- Re-install the two wire harness retainer brackets. There are two sets of mounting studs for the top retainer bracket. Use the upper studs for the AGM battery as shown (Figure 7a). Route battery strap behind brackets as shown. Secure the relay tab behind the lower retainer bracket as shown (Figure 7b).

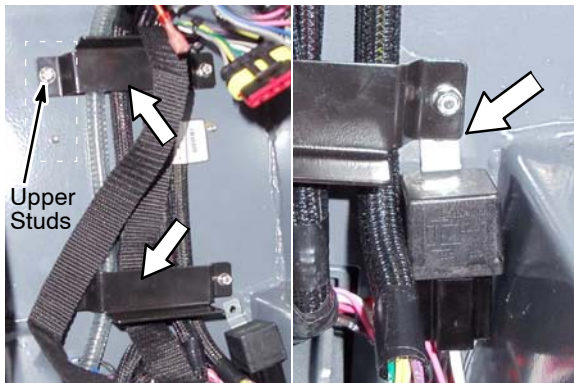


Fig. 7a

Fig. 7b

- Connect the battery discharge meter to the AGM battery jumper harness as shown (Figure 8a). Red wire/pin 1 (+), black wire/pin 2 (-), blue wire/pin 3 and purple wire/pin 4.

Using a zip-tie, secure the meter to the relay as shown (Figure 8b).



Fig. 8A

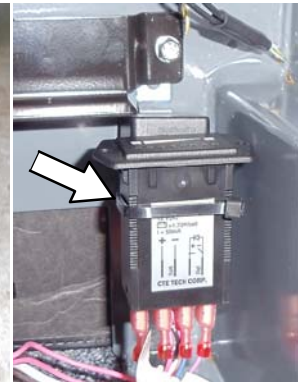


Fig. 8b

- Within the machine's wiring, directly below the charger plug connector, disconnect the gray/68 wire labeled "LITHIUM" from the pink/41C wire labeled "BATTERY SELECT" then connect the orange/63 wire labeled "AGM" in its place (Figure 9).

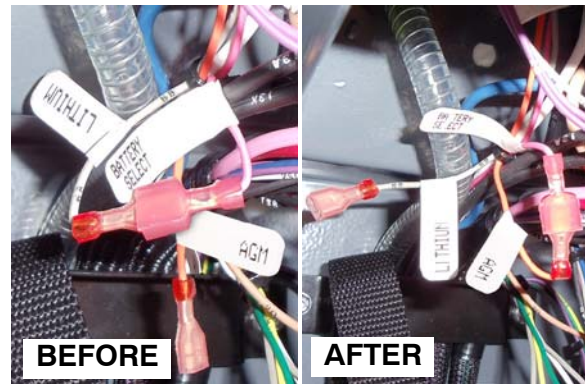


Fig. 9

- Remove the lithium-ion battery discharge gauge from handle (Figure 10).

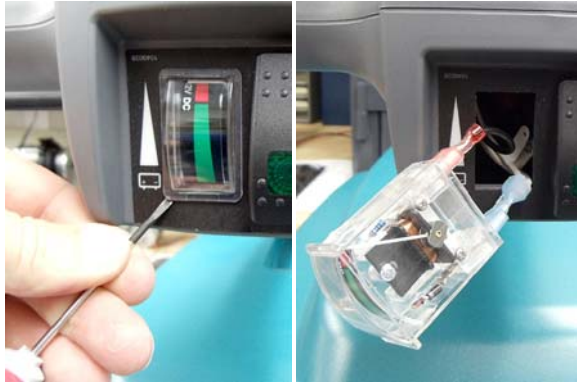


Fig. 10

- Install the AGM battery discharge gauge in its place (Figure 11). Connect white wires to positive (+) terminal and black wire to negative (-) terminal.

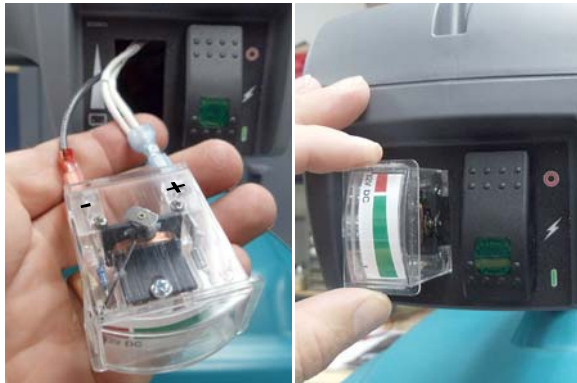


Fig. 11

- Install the AGM battery into the machine and secure with battery strap. Using the hardware supplied with new battery, connect the battery cables to new battery as shown (Figure 12). Red to positive (+) then black to negative (-) in this order. Replace the machine's battery compartment cover.

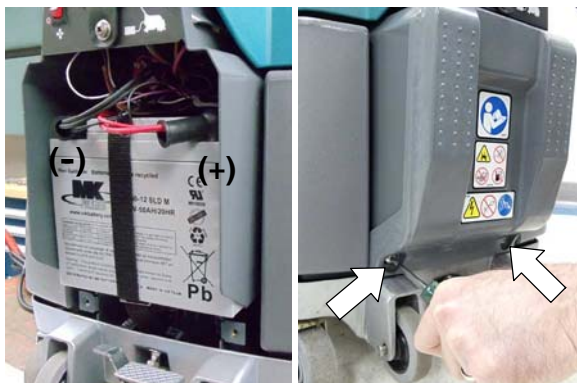
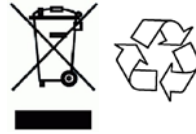


Fig. 12

NOTE: For battery charger operating instructions, refer to the User's Manual supplied with the battery charger. Also refer to the machine's operator manual for further information regarding battery charging.

- Dispose or store old battery in an environmentally safe way according to your local regulations. Contact your local regulatory authorities for proper transporting and disposal instructions. Help preserve the environment – Recycle!



- Remove the "Lithium-ion" labels from machine (Figure 13).

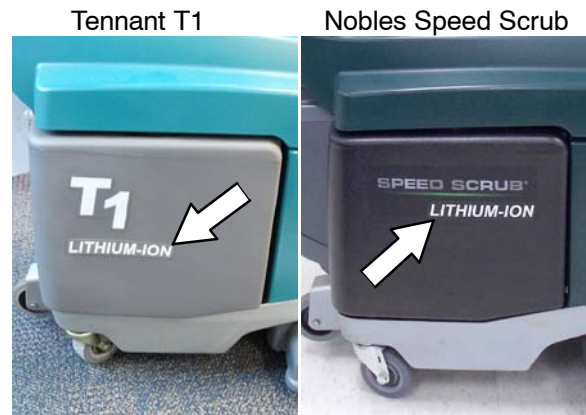


Fig. 13